

SurfView

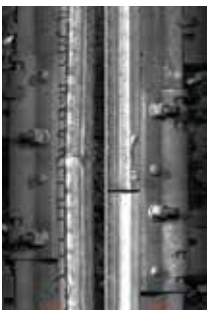
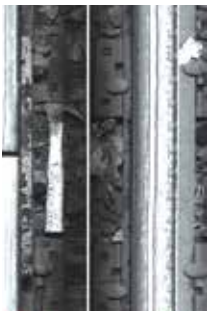
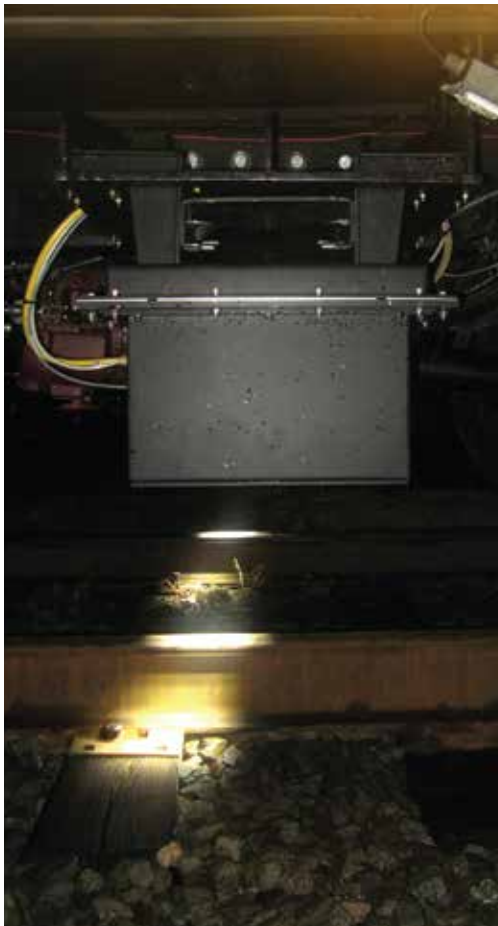
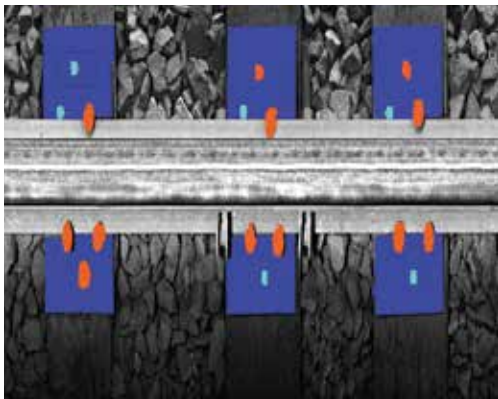
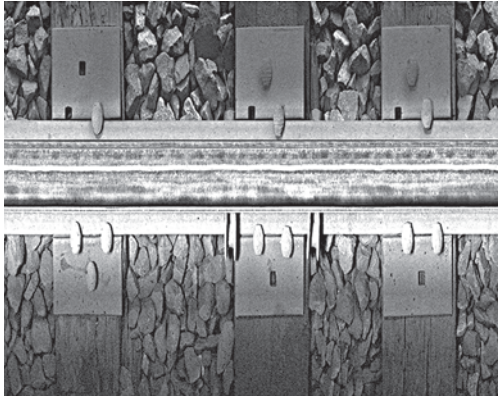
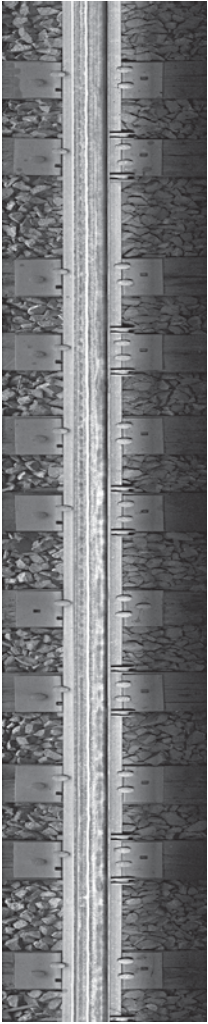
Rail

Automated Rail Surface
and Track Inspection



SurfView-Rail is a vehicle based rail and track surface imaging and inspection system. The system is installed on a rail vehicle or a hi-rail truck, and scans the rail and the track with the desired resolution. System generates very high resolution images of the rail and track components such as ties (sleepers), tie plates, fasteners, ballast, etc. There is an optional laser scanning capability if the system is paired with our TrackView-Profile system. SurfView-Rail comes with on board computer, acquisition and display software, up to six cameras scanners and all cables.





Inspections and Measurements

- Visual and Automated Rail Surface Condition
- Automated Track Inspection Such as Ballast Condition
- Joint Bar Inspection and Counting
- Detection of Missing, Broken Rail Fasteners
- Detection of Damaged or Displaced Sleepers

Features

- Line Scan Technology
- Up to 80,000 Line Scans Per Second
- On-Board Display
- Off-Line Display for Detailed Post Processing
- Triggered Line Scan Cameras
- High Quality Images for Automated and Visual Inspection
- High Intensity Lighting System
- Foot Pulse Signature
- GPS-Based Position Support
- Up to 6 Cameras for High Resolution Imaging of the Track
- Sophisticated GUI for User Interaction, Marking, Storage, etc.
- Operating Temperature: of -40°C to 55°C
- Increased Track Inspection Efficiency
- Imaging Speeds of Up to 120 km/h

