

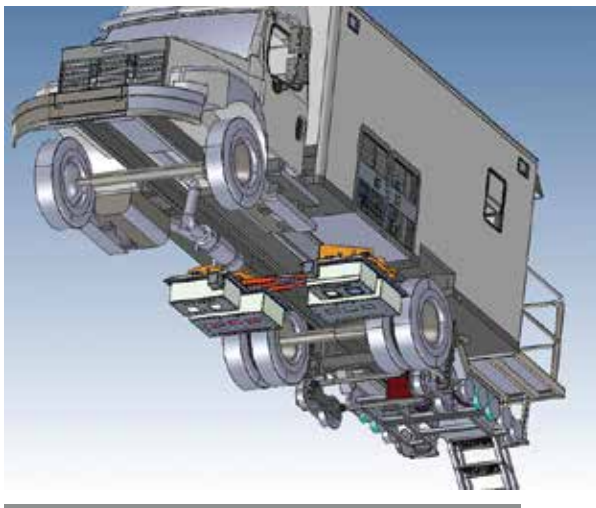
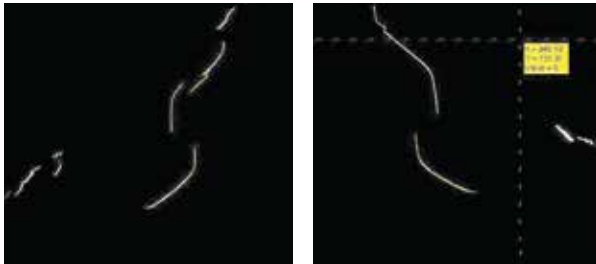
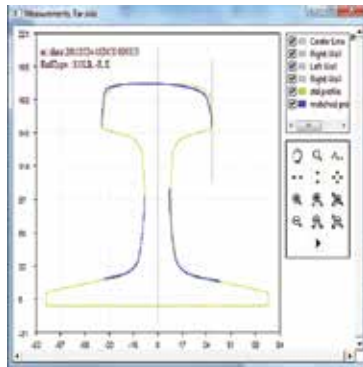
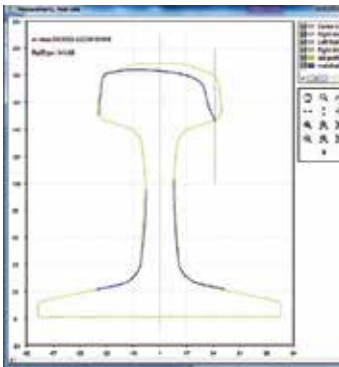
A Vehicle Based Rail and
Track Profile Measurement System



TrackView-Profile is a vehicle based rail profile, track profile and track geometry measurement system. This system can be installed easily on a hi-rail truck or a rail vehicle. Its multi-camera and laser system is designed for effective laser/rail imaging and profile reconstruction.

TrackView uses high power lasers for illumination and can operate easily during day and night operations. System provides rail cant and track gauge in addition to the rail profile data and rail profile parameters. It also provides instant rail type information. The track profile option provides a laser generated track profile to evaluate the tie and ballast condition on the track. This data can be combined with the image data generated by SurfView-Rail product to obtain a complete status of the track condition.





Measurements

- › Rail Profile
- › Rail Cant
- › Rail Height
- › Head Width
- › Gauge and Field Lip
- › Rail Weight
- › Percent Head Loss
- › Gauge Wear
- › Vertical Wear
- › 45° Wear
- › Gauge Face Width
- › Gauge Face Angle
- › Track Gauge (Optional)
- › Track Cross Level (Optional)
- › Rail Type Recognition
- › Ballast Condition (Optional)

Features

- › Real-Time Processing
- › Installed on Either Hi-Rail Truck or Rail Vehicle
- › Operation Under Different Environmental Conditions
- › Rail Profile at Desired Distance
- › Real Time Report and Alarm on Rail Defects with Adjustable Levels
- › Supplied Complete with All Hardware and Software
- › Delivered Ready for Installation
- › Storing Miles of Data Locally for Post Viewing and Processing
- › Profile Measurement Speed Up to 120 km/h

